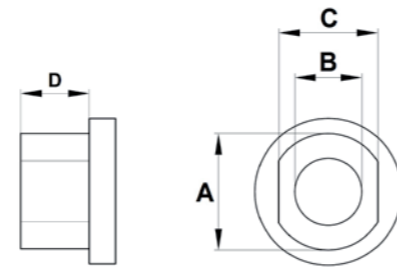


## MOUNTING BELL

Vehicle Manufacturer	Vehicle Type	Axle	A: Disc interface PCD	B: Stud Bolt Circle	C: Center Hole Dia.	D: Offset	E: Face Thickness	Part Number
Aston Martin	Vantage V8 GTE	Front	10 x 228,6	18 x 108	81,05	10,3	8	EB380100401
		Rear						
Mercedes	SLS AMG GT3 Endurance Front	Front	10 x 228,6	10 x 112	63,8	14,6	8	EB380100301
		Rear	12 x 226	10 x 112	63,8	19,8	8	EB355120101
Porsche	997 GT3 Cup	Front	10 x 228,6	5 x 130	103	28	6,5	EB380100101
		Rear	12 x 208	5 x 130	103	38,8	6,5	EB350120101
Porsche	991 Carrera 3.4 Ceramic caliper	Front	12 x 208	5 x 130	98	30,8	6,5	EB350120201
		Rear	12 x 208	5 x 130	98	38,9	6,5	EB350120301
Porsche	991 Cup 991 GT America	Front	12 x 246,6	5 x 130	93	30	6,5	EB380100501
		Rear	12 x 256	5 x 130	93	37,5	6,5	EB380120101
Porsche	981 Cayman Ceramic caliper	Front	12 x 208	5 x 130	98	30,8	6,5	EB350120201
		Rear	12 x 208	5 x 130	98	30,9	6,5	EB350120401



## BOBBIN SET

Quantity	A	B	C	D	Brake Disc Flange Thickness	Part Number
10	11	6.4	9.45	6.55	6.25	SA100100101
12	10	6.4	9.45	6.55	6.25	SA100120101
12	11	6.4	9.45	6.55	6.25	SA100120201

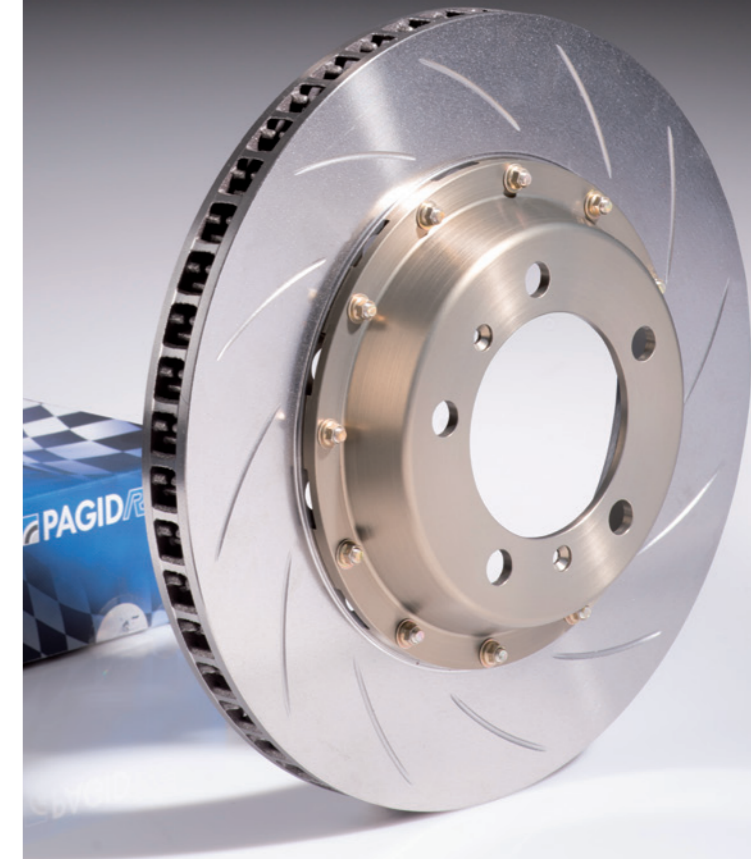
## PAGID RBD – racing brake disc

High performance racing brake disc, two versions optimized for weight, cooling performance and crack resistance for either sprint or long endurance races.

The modular design allows the use of either the lightweight version (for sprint races or rally), or the endurance version with the same hat (bell) for specific vehicle applications.

## DESIGN FEATURES

- The floating connection is between the bobbin and disc thus minimizing wear on the hat
- Hard anodized aluminium hats for increased surface hardness and wear resistance
- Hard anodized and minimal wear extends the usable life of the hat
- Careful attention has been paid to the airflow into the ventilation chamber and onto the outside friction face through then openings in the connection flange to the disc
- The ventilation chamber is specially designed to improve heat transfer from the disc to the cooling airflow
- The surface finish (groove pattern) has been developed in combination with PAGID RACING brake pads for optimal system performance and wear characteristics.



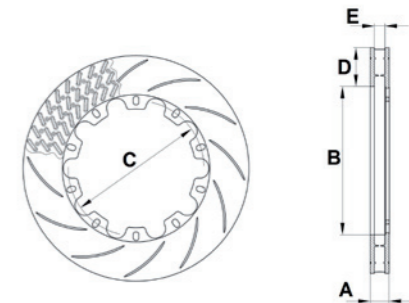
TMD Performance GmbH  
Schlebuscherstr. 99 - 51381 Leverkusen - Germany  
www.pagidracing.com - info@tmdperformance.com  
+49 201 36 09-0

bt Brake Technology of America  
+1 239 540 1729  
pagid@braketechnology.com

**HIGH PERFORMANCE  
RACING BRAKE DISC**

# ASSEMBLY

Vehicle Manufacturer	Vehicle Type	Race Application	Axle	Side	Outside Diameter	Thick-ness	Part Number Brake Disc	Part Number Mounting Bell	Part Number Bobbin Set	Part Number Assembly
Aston Martin	Vantage V8 GTE	Sprint Front: D65	Front	Left	380	32	ED380320101	EB380100401	SA100100101	SD380320901
				Right	380	32	ED380320201			SD380321001
		Endurance Front: D65	Front	Left	380	32	ED380320501	EB380100401	SA100100101	SD3803201101
				Right	380	32	ED380320601			SD3803201201
Mercedes	SLS AMG GT3	Endurance Front: D65	Front	Left	380	35	ED380350101	EB380100301	SA100100101	SD380350101
				Right	380	35	ED380350201			SD380350201
			Rear	Left	355	32	ED355320101	EB355120101	SA100120101	SD355320101
				Right	355	32	ED355320201			SD355320201
Mercedes	SLS AMG GT3	Sprint Front: D52	Front	Left	380	35	ED380350301	EB380100301	SA100100101	SD380350301
				Right	380	35	ED380350401			SD380350401
			Rear	Left	355	32	ED355320101	EB355120101	SA100120101	SD355320101
				Right	355	32	ED355320201			SD355320201
Porsche	997 GT3 Cup	Endurance	Front	Left	380	32	ED380320501	EB380100101	SA100100101	SD380320301
				Right	380	32	ED380320601			SD380320401
			Rear	Left	350	28	ED350280501	EB350120101	SA100120101	SD350280301
				Right	350	28	ED350280601			SD350280401
Porsche	997 GT3 Cup	Sprint	Front	Left	380	32	ED380320101	EB380100101	SA100100101	SD380320101
				Right	380	32	ED380320201			SD380320201
			Rear	Left	350	28	ED350280301	EB350120101	SA100120101	SD350280101
				Right	350	28	ED350280401			SD350280201
Porsche	991 Carrera 3.4 Ceramic caliper	Endurance	Front	Left	350	34	ED350340301	EB350120201	SA100120101	SD350340101
				Right	350	34	ED350340401			SD350340201
			Rear	Left	350	28	ED350280501	EB350120301	SA100120101	SD350280501
				Right	350	28	ED350280601			SD350280601
Porsche	991 Carrera 3.4 Ceramic caliper	Sprint	Front	Left	350	34	ED350340101	EB350120201	SA100120101	SD350340301
				Right	350	34	ED350340201			SD350340401
			Rear	Left	350	28	ED350280301	EB350120301	SA100120101	SD350280701
				Right	350	28	ED350280401			SD350280801
Porsche	991 Cup 991 GT America	Endurance	Front	Left	380	32	ED380320701	EB380100501	SA100100101	SD380320501
				Right	380	32	ED380320801			SD380320601
			Rear	Left	380	30	ED380300101	EB380120101	SA100120201	SD380300101
				Right	380	30	ED380300201			SD380300201
Porsche	991 Cup 991 GT America	Sprint	Front	Left	380	32	ED380320901	EB380100501	SA100100101	SD380320701
				Right	380	32	ED380321001			SD380320801
			Rear	Left	380	30	ED380300101	EB380120101	SA100120201	SD380300101
				Right	380	30	ED380300201			SD380300201
Porsche	981 Cayman Ceramic caliper	Endurance	Front	Left	350	34	ED350340301	EB350120201	SA100120101	SD350340101
				Right	350	34	ED350340401			SD350340201
			Rear	Left	350	28	ED350280501	EB350120401	SA100120101	SD350280901
				Right	350	28	ED350280601			SD350281001
Porsche	981 Cayman Ceramic caliper	Sprint	Front	Left	350	34	ED350340101	EB350120201	SA100120101	SD350340301
				Right	350	34	ED350340201			SD350340401
			Rear	Left	350	28	ED350280301	EB350120401	SA100120101	SD350281101
				Right	350	28	ED350280401			SD350281201



## VENTILATED BRAKE DISCS

Outside Diameter	A: Thickness	B: Inside Diameter	C: Hat interface PCD	Mounting Side	According Bobbin Set	D: Max. Pad Depth	E: Vent Opening	Weight Kg.	Part Number
350	28	226	12 x 208	Left	SA100120101	60	15	6,2	ED350280501
				Right					ED350280601
350	28	226	12 x 208	Left	SA100120101	60	17	5,2	ED350280301
				Right					ED350280401
350	32	226	12 x 208	Left	SA100120101	60	17	6,9	ED350320101
				Right					ED350320201
350	34	226	12 x 208	Left	SA100120101	60	15	8,2	ED350340301
				Right					ED350340401
350	34	226	12 x 208	Left	SA100120101	60	17	7,5	ED350340101
				Right					ED350340201
380	30	280	12 x 260	Left	SA100120201	50	17	5,8	ED380300101
				Right					ED380300201
355	32	250	12 x 226	Left	SA100120101	52	17	6,5	ED355320101
				Right					ED355320201
380	32	250	10 x 228,6	Left	SA100100101	65	15	9,2	ED380320501
				Right					ED380320601
380	32	250	10 x 228,6	Left	SA100100101	65	17	8,1	ED380320101
				Right					ED380320201
380	32	250	10 x 246,6	Left	SA100100101	56	15	8,2	ED380320701
				Right					ED380320801
380	32	250	10 x 246,6	Left	SA100100101	56	17	7,4	ED380320901
				Right					ED380321001
380	35	250	10 x 228,6	Left	SA100100101	65	17	9,6	ED380350101
				Right					ED380350201
380	35	275	10 x 253	Left	SA100100101	52	17	8,1	ED380350301
				Right					ED380350401